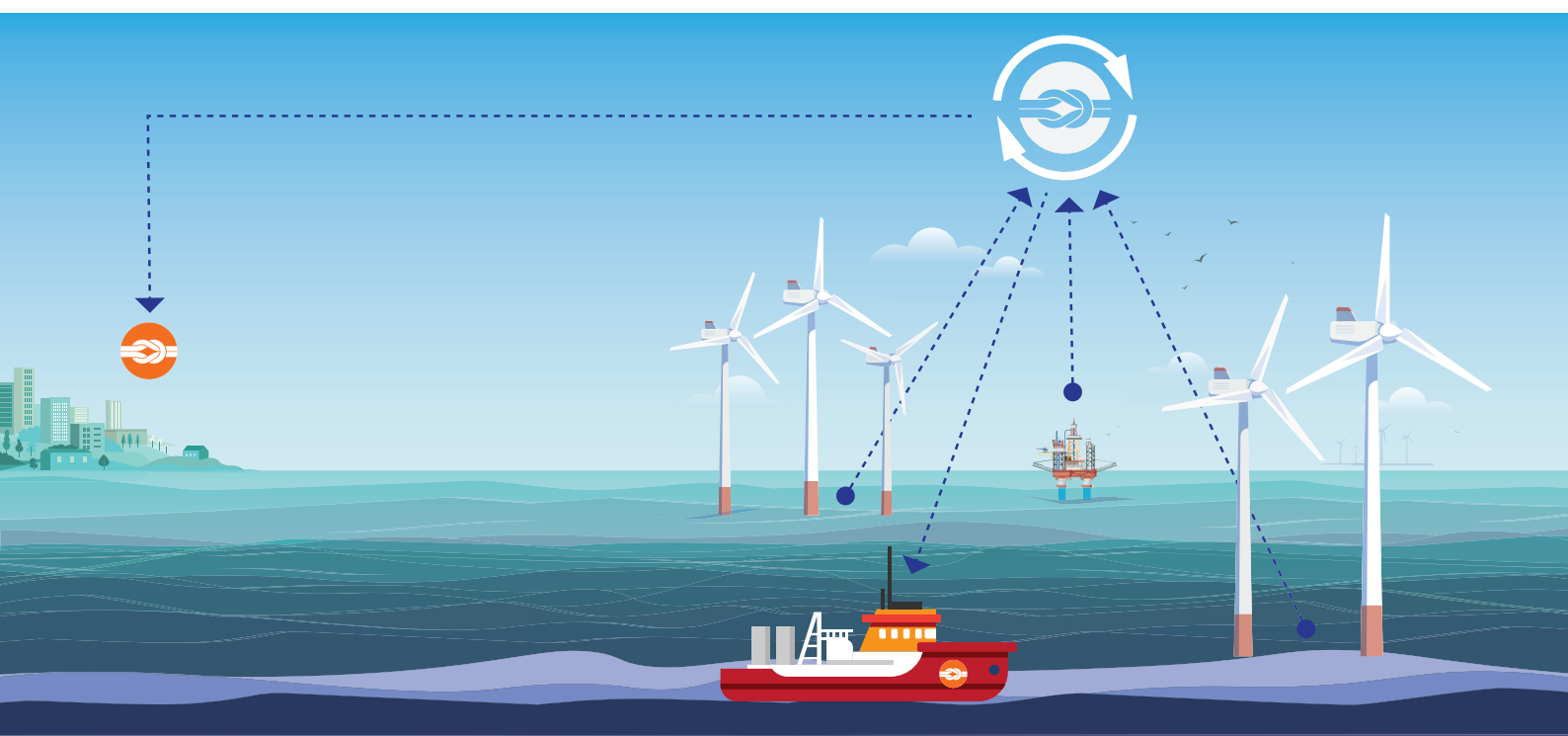


MM WEATHER



Web-based weather network

MM Weather from WISE Group is a web-based onshore data collection platform and Weather Network for distribution of data to all types of users. It uses standard web protocols for collecting real-time MetOcean data from any remote location, typically offshore.

Data is presented to users via a series of auto-refreshing web pages customised to meet individual client's requirements as well as providing the facility for interrogating archive data in either graphical or exported data file form.

The main and primary user benefit for MM weather to any client is data visibility and access to all stakeholder in a safe and secure manner. Real time MetOcean data from remote locations, typically offshore to other offshore and onshore locations.

Key features/benefits:

- Secure, reliable and easy access to real time data anywhere and on any device via an internet connection.
- Scalability: if a client has more than one asset scattered across different geographically locations. Merging sites is easy with this solution. In the case if the customer has more than one asset then we can create this access for them.
- Third party access to data [i.e. weather forecast companies, QC companies, authorities etc.]
- We can also carry out periodical checks or QC on the validity of the data.
- Remote download capabilities
- Remote Trending

MM Weather

Maps Latest Data Graphs Data Export Help

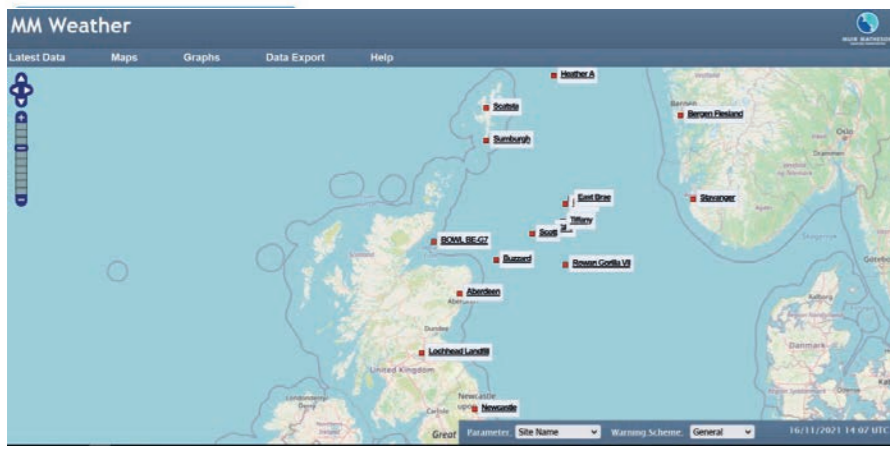
Latest Data

- Data Summary [Map](#)
- Northern North Sea [Map](#)
- Central North Sea [Map](#)
- Southern North Sea [Map](#)
- Irish Sea [Map](#)
- Morecambe Bay [Map](#)
- Liverpool Bay [Map](#)

Customer Feedback!
We are always trying to improve this website. If you would like to send us any ideas, suggestions or feedback on your experience then please do so here.
The Muir Matheson Software Team

[Click here to send your feedback](#)

News Update!
Recent updates have been made to MMWeather. This includes a new Weather Reporting facility that creates public readable PDF Weather Reports and a new Home Page.



MM Weather allows for easy access to current Meteorological conditions on a remote site—or multiple sites—by using a standard web-browser. Remote sites can be typically offshore platforms and rigs, offshore windfarms, remote industrial installations, etc. MM Weather can be configured to communicate with virtually all kinds of existing sensors or measurement systems at these sites to make the data easily accessible for the users.

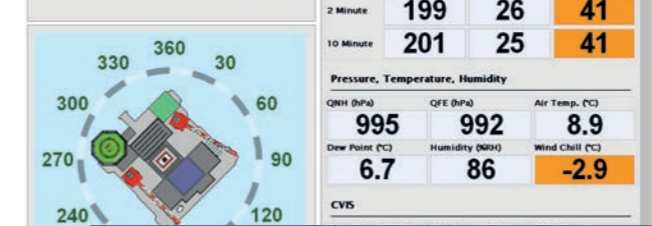
Data are typically updated every ten minutes but this can be configured according to customers requirements.

MM Weather was originally developed by Muir Matheson Ltd and has been in continuous operation for many years. MM Weather is very user friendly, very comprehensive and easy to navigate.

MM Weather

Maps Latest Data Graphs Data Export Help

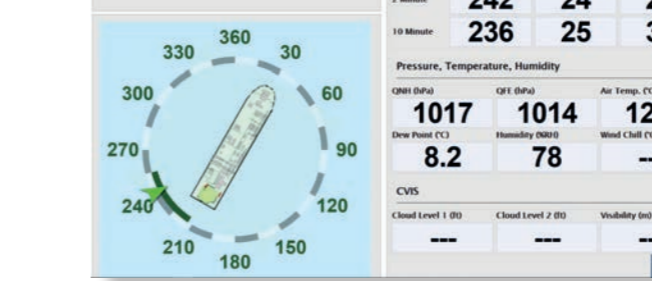
Balmoral 19-Nov-12 14:07
191407Z AUTO 20042CS2KT 2300NDV RA VV000/// 09/07 Q0995=



MM Weather

Maps Latest Data Graphs Data Export Help

OSI 16-Nov-21 14:03
METAR 161403Z AUTO 24023KT ///NDV 12/08 Q1017=



MM Weather

Maps Latest Data Graphs Data Export Help

Maps	Latest Data	Graphs	Data Export	Help								
Northern North Sea	Time (UTC)	Report	Wind Dir (°)	Wind Speed (kts)	Wind Gust (kts)	Air Temp (°C)	Dew Point (°C)	Cloud Level 1 (ft)	Cloud Level 2 (ft)	Visibility (m)	QNH (hPa)	Present Weather
Bergen Flesland	19-Nov-12 13:50		120	33	43	4.0	3.0	900	2000	9000	1003	Light Rain
Floro	19-Nov-12 13:20		160	14	—	5.0	3.0	1200	2000	9999	1002	Light Rain Shower
Heather A	19-Nov-12 13:58		152	30	33	7.4	5.0	686	NIL	7450	994	Light Rain
Ninian Central	19-Nov-12 14:01		147	20	29	7.7	5.8	932	NIL	6195	995	Haze
Ninian North	Back Soon											
Ninian South	Coming Soon											
Scatsta	19-Nov-12 13:50		140	9	—	8.0	6.0	500	700	3000	990	Rain
Stavanger	19-Nov-12 13:50		160	15	—	7.0	4.0	2500	3300	9999	1006	Rain
Sumburgh	19-Nov-12 13:50		180	17	—	9.0	8.0	500	800	6000	990	Light Rain
Thistle	19-Nov-12 13:58		150	31	35	7.2	3.9	3805	NIL	13269	995	Unidentified Precipitation
Central North Sea	Time (UTC)	Report	Wind Dir (°)	Wind Speed (kts)	Wind Gust (kts)	Air Temp (°C)	Dew Point (°C)	Cloud Level 1 (ft)	Cloud Level 2 (ft)	Visibility (m)	QNH (hPa)	Present Weather
Aberdeen	19-Nov-12 13:50		190	10	—	9.0	8.0	1100	1500	9999	992	NIL
Balmoral	19-Nov-12 13:58		200	23	40	8.8	6.7	229	NIL	4181	995	Rain
Beatrice A	19-Nov-12 13:59		165	24	27	11.2	7.8	///	///	55969	988	NIL
Brae-A	19-Nov-12 13:58		192	53	59	7.7	7.2	820	1936	3384	994	Light Rain
Braefoot Bay	19-Nov-12		245	17	27							

MM Weather

Maps Latest Data Graphs Data Export Help

Plot Graph

Select Site(s)
Aberdeen {SITE 2}

Select Parameter(s)
Basic Parameters
Air Temp 1-10 min
Dew Point-10 min

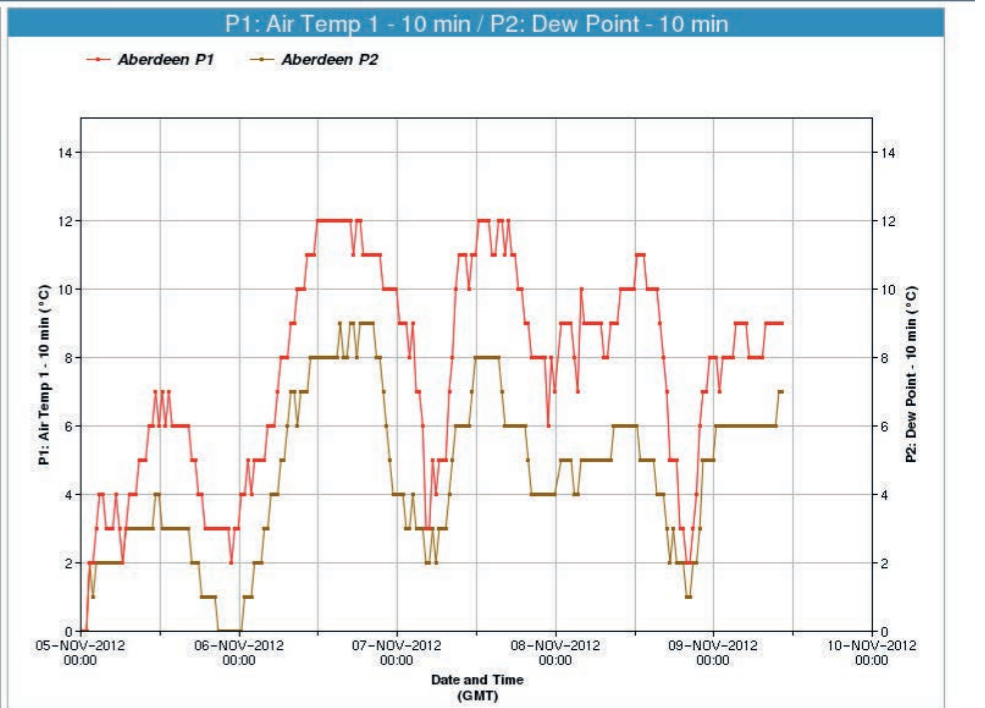
Select Start Date
05 Nov 2012

Select End Date
09 Nov 2012

Time Period To Plot
Use Above Date F

Plot Type
Line and Points

Select AWWs to overlay
General



Here are screenshot examples of latest data from one of our Meteorological systems on a offshore platform. It shows all Meteorological conditions required for Helicopter operators. Different colours are used to highlight dangerous & hazardous conditions. Graphs are generated through the MM Weather site. The Parameters, dates and sites can be chosen by the user to match their needs.

MM Weather can easily be configured to send data into HELIMET or other national or regional networks.

In this day and age of remote access, we value our clients security and data and pay very serious attention and importance to how this is handled. Our web platform is a one way traffic with data sent out and we simply receive and display this real time information.

MM Weather can also be used for other types of data and other applications, please contact WISE Group to discuss your application.

Installation and commissioning services Offshore experience

We have a highly qualified team of field service engineers who can undertake service work on all kinds of meteorological and oceanographic sensors and systems. All our engineers have extensive experience in offshore, shipyard and onshore work.

Onshore service and calibration services

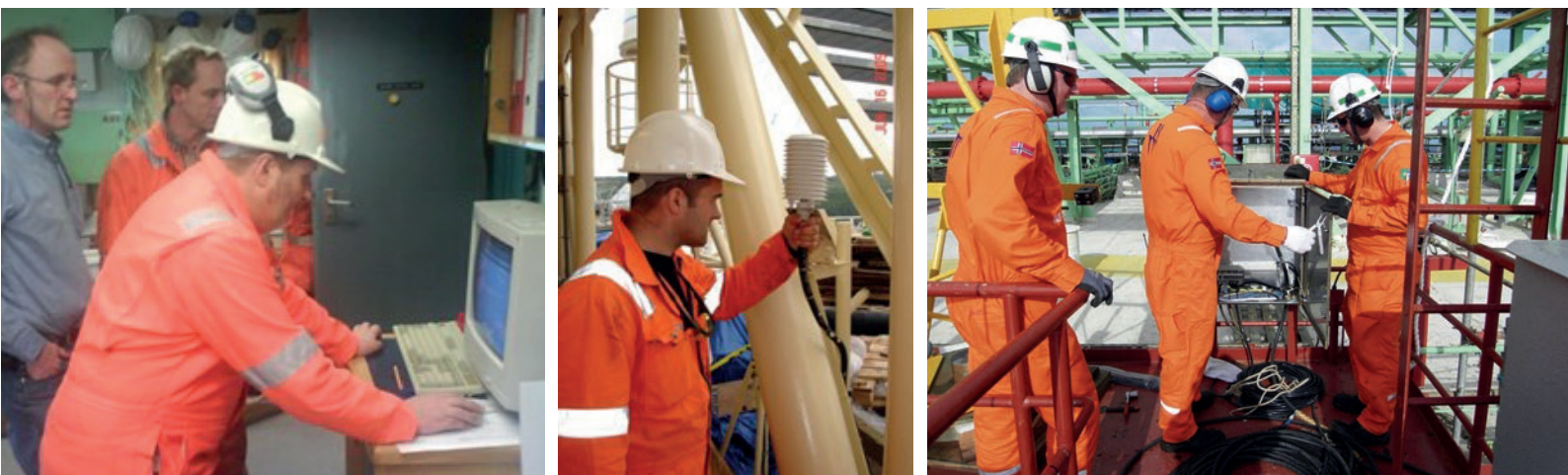
We are also able to service and calibrate all kinds of sensors and MetOcean equipment used in offshore renewable projects. Our workshop is equipped for servicing and calibrating many different kinds of sensors and instrumentation.

Operation and maintenance services - O&M

The WISE team of field service engineers can also undertake O&M service work on MetOcean sensors and systems as well as on other kinds of sensors and systems.

Our engineers can take care of preparing O&M schedules, carry out maintenance visits, analyse data, service equipment and many other related tasks.

We can also offer online preventive service contracts for systems that can be reached online.



Turn-key instrumentation projects

We can take full responsibility for all aspects of offshore instrumentation projects from design of the system, engineering, system integration, installation, commissioning, operation and maintenance to data management and data analysis.

CERTIFICATIONS:

WISE GROUP:
ENVIRONMENTAL INSTRUMENTATION
IS OUR SPECIALITY!

