

SINCE

1865

**Bertling** 



BERTLING – WE DELIVER  
OUR PROMISE.

➤ **COUNTRY PRESENTATION 2023**

Global setup. Local strategy.

## WHAT WE WILL DISCUSS TODAY

1. The Bertling Group at a glance
2. Vision & Mission
3. Global Structure & Organisation
4. Historical Milestones
5. Worldwide Network
6. Bertling's Logistics Service Portfolio
7. Business Units – Shipping/Logistics/IT
8. Logistics Core Services
9. Special Logistics Services
10. IT Services, Software Solutions & Systems
11. Bertling's Unique Set Up
12. Case Studies
13. Summary
14. Contact Details



## THE BERTLING GROUP AT A GLANCE

- Founded in 1865, more than 158 years of experience in shipping & freight forwarding
- Privately owned and managed by active shareholders
- Headquartered in Hamburg, Germany
- 5 regions, 50 offices, 30 countries
- Three major business units: Ship Owning, Chartering & Broking • Logistics & Project Freight Forwarding • IT & Software Solutions (Bertling EDI Service & IT GmbH – Besitec)
- Industry focus: Major Energy, Capital, Mining & Construction, Power Generation, Renewables, Petrochemicals
- In-house developed transport management software (BLU)
- End-to-end Sustainability solution on our joint Road to Zero



# › WHAT WE ARE STRIVING FOR EVERY DAY, EVERYWHERE

## OUR VISION

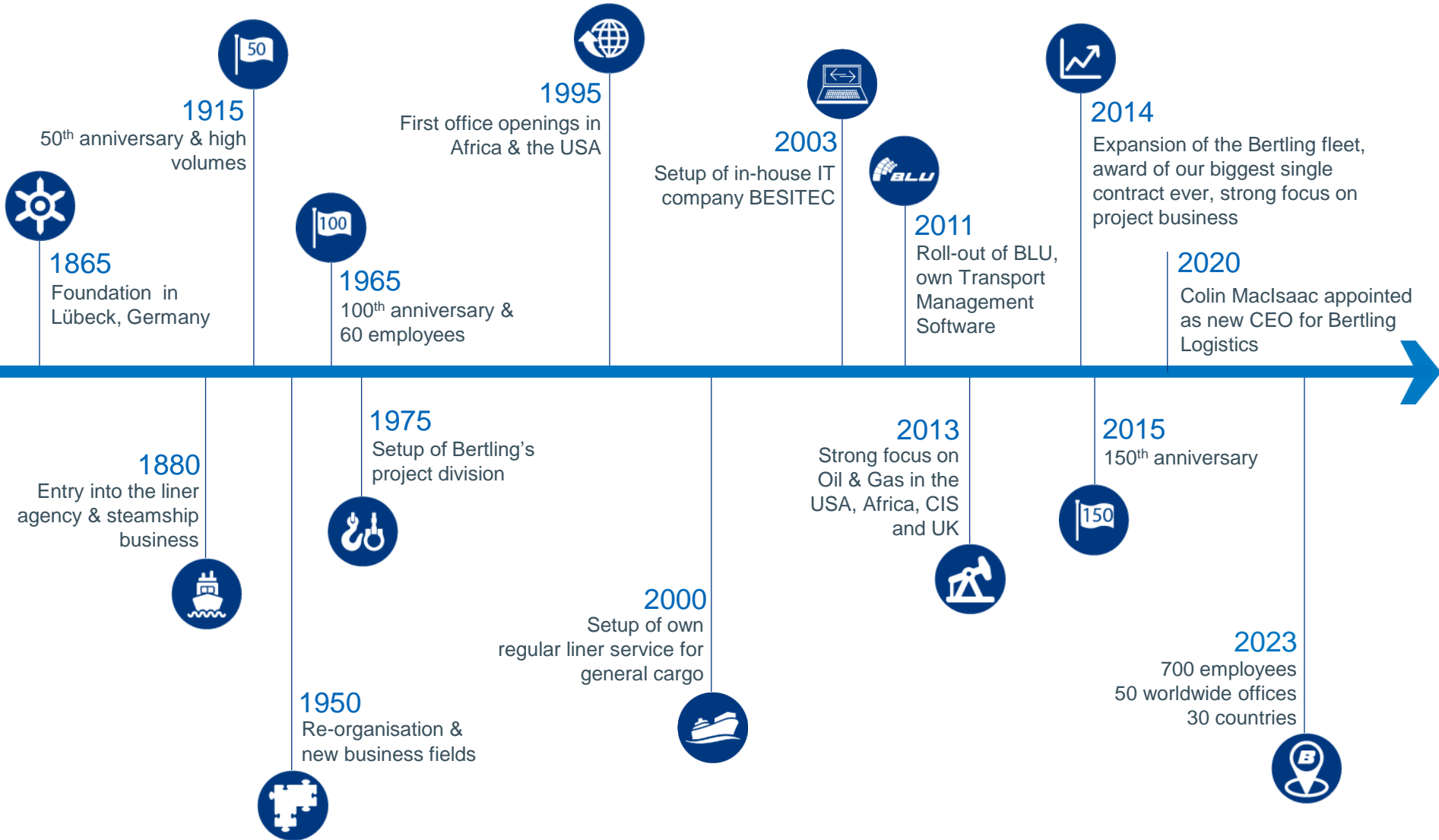
To be the “Project Freight Management Partner” of choice to the energy, mining, construction, renewables and government infrastructure sectors by offering responsible logistics services

## OUR MISSION

- › provide best practice, cost effective project freight management logistics and material control services
- › responsive to and exceed customers’ requirements and expectations
- › operate and maintain safe and environmentally responsible working practices
- › respect and support cultures and traditions of all countries where we operate
- › develop sustainable logistics solutions in close collaboration with our customers to support their sustainability goals by helping them 1) measure, 2) reduce and 3) offset their emissions



# MORE THAN 157 YEARS IN BUSINESS HISTORICAL MILESTONES





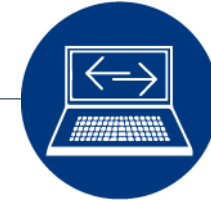
## SHIP OWNING, CHARTERING AND BROKING

- since 1865
- 45 brokerage experts in Hamburg, Singapore, Shanghai, Lima and Miami
- own fleet of modern ocean-going vessels of different types
- 300+ experienced crew members
- focused on long-term contracts in the container, bulk, breakbulk, tanker and project market
- worldwide trade lanes on spot and period basis



## LOGISTICS AND PROJECT FREIGHT FORWARDING

- established in 1975
- worldwide office, agent and sub-contractor network
- global track-record of over-dimensional/heavy-lift projects
- go-anywhere approach, especially in remote areas
- reliable technical solutions for complex resupply logistics projects
- turnkey contract logistics management



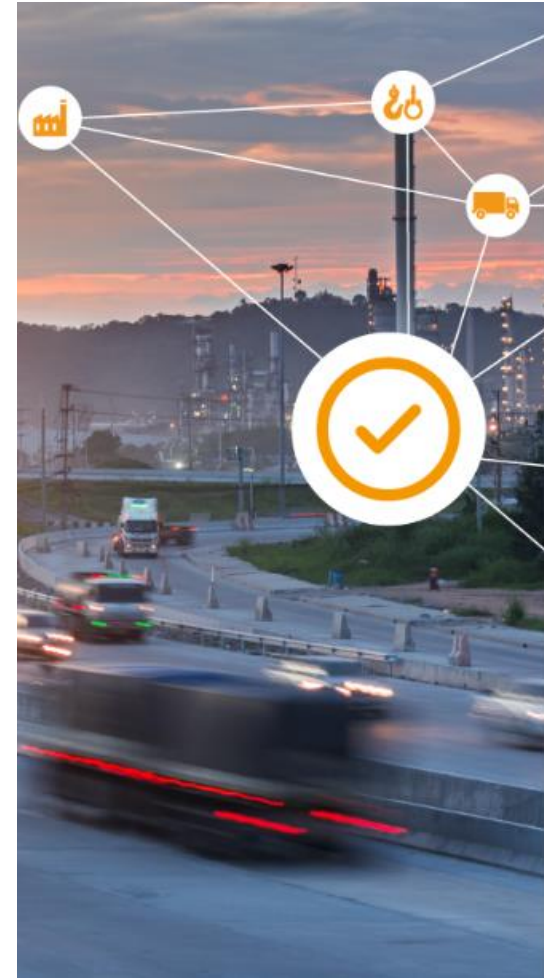
## GLOBAL IT AND SOFTWARE SOLUTIONS

- founded in 2003
- in-house IT company of Bertling
- presences in Germany and India
- 22 developers, software engineers and technical/system experts
- enhancement and maintenance of Bertling's global transport management software BLU
- industry-leading software solutions and smart IT services
- modern IT infrastructure maintained from Germany



## WHAT WE CAN DO FOR YOU

- › Freight forwarding services for all modes of transportation (air/sea/road/rail) and all sizes of cargo
- › Project logistics services including risk & compliance management
- › Transportation of extra-large/over dimensional/heavy-lift cargoes including heavy-lift engineering and technical & commercial consulting
- › Health, safety, quality and environmental planning
- › Feasibility studies, route & port surveys
- › Door-to-door service and customs clearance
- › Sea freight including breakbulk, RoRo, charters, FCL and LCL traffic
- › Warehouse services - packing/unpacking/material control, consolidation & deconsolidation



# WORLDWIDE OFFICE NETWORK & DEDICATED PARTNERS





## WATERPROOF SHIPPING & CHARTERING SOLUTIONS 24/7

- Strong shipping and chartering expertise since the company's foundation
- Main trade lanes between Latin America, North America, Europe and Asia
- Increasing number of project cargo shipments, in collaboration with Logistics
- Focus on handling large volumes of cargo (fertilizer, energy products, steel etc) to and from worldwide locations
- Comprehensive service portfolio, including voyage management, time chartering & documentation
- Excellent industry contacts & brokerage portfolio



@ Contact for more information: [Christoph Dunkelberg \(chartering@fhbertling.de\)](mailto:chartering@fhbertling.de)

## OUR HEART BEATS FOR PROJECTS

- Global office network and dedicated partners in all key markets
- Strong focus on oil & gas, mining and energy projects, also GFF and resupply business
- Unrivalled track-record of record-breaking projects around the world
- Strong expertise and know-how by in-house heavy-lift, IT and technical teams
- Dedicated group-wide and certified systems (HSSE, Compliance, (QM, Legal, Risk Management, etc)
- Unique setups in remote locations like Iraq, Kazakhstan or Turkmenistan
- Innovative IT concepts for each client and project
- People business, continuous internal training, career progression & development



## COMMITMENT TO YOUR PROJECT

- ▶ Bertling is a market leader in global project logistics
- ▶ Client base made up of major EPCs around the globe
- ▶ Management of large and complex turnkey freight forwarding contracts
- ▶ “Go Anywhere” approach and experience/local know-how in the most challenging territories
- ▶ Dedicated resources and skills assigned to your project → 1 contact person
- ▶ Coverage of all logistics services required in the project life cycle

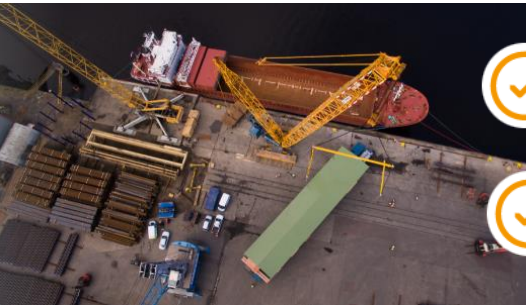


## WE CAN DO BIG AND SMALL

- › IATA agents and strong expertise in worldwide air freight shipments
- › Excellent relationships to shipping lines, for containers, conventional cargo or RoRo services
- › High quality services and strong customer focus from project start to end
- › Continuous investment in IT services and technology for state-of-the-art tracking and tracing solutions
- › Highly experienced and quality/compliance conscious employees
- › Global presence in all major transport hubs



## INDUSTRY-LEADING TECHNICAL CONCEPTS



Skilled heavy-lift engineers across the whole Bertling network, based in clients' offices or in the field



Unrivalled expertise in loading, transportation and discharge of heavy-lift cargos



Project-specific risk assessments, detailed technical planning, equipment engineering and high-quality CAD drawings



Close collaboration with customers and suppliers to ensure all work is planned and engineered to suit the project constraints and environments unique to each project



Personal attendance and supervision at pre-carriage loading operations, movements of sensitive/high-value cargo items, at load and discharge ports



Production of operational report packs and detailed documentation

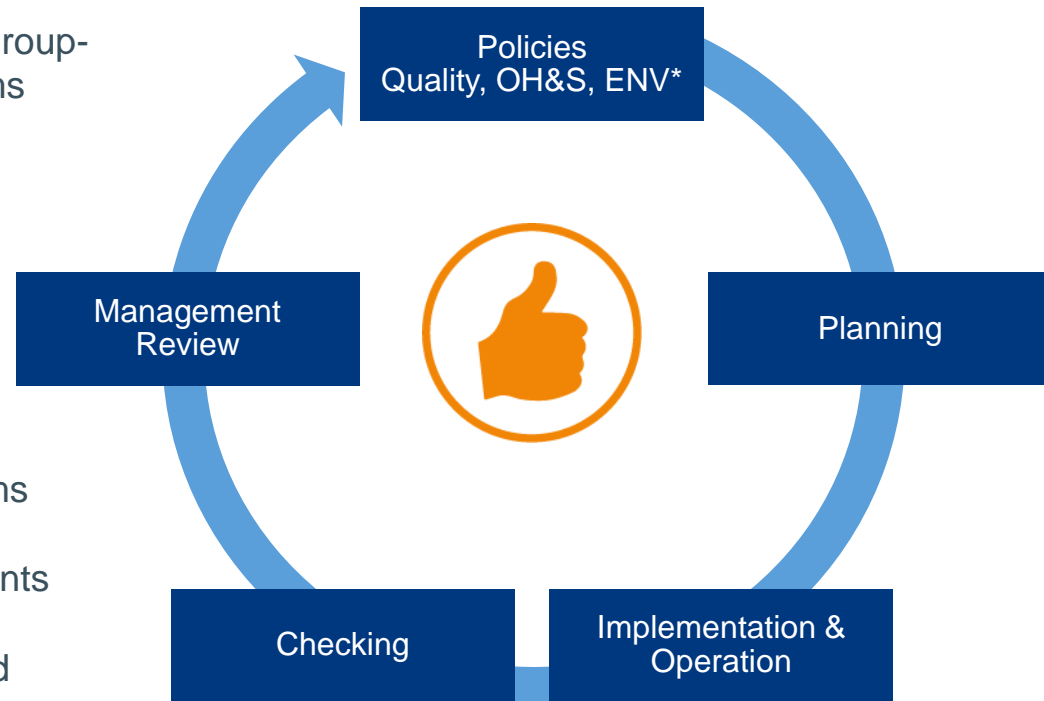


Regular HSSE diligence inspections at load ports, on board of vessels and at sub-contractors' premises



## REPUTATION FOR HIGH-QUALITY SERVICES

- All transports planned and executed to the highest QHSE standards
- One global QHSE strategy based on group-wide policies and management systems
- ISO 9001, ISO 14001, ISO 37001, and/or ISO 45001 certification
- AEO accreditation, regional QM standards and memberships in local freight organisations
- Continuous employee training programs
- Tailor-made project-specific assessments
- Network of carefully selected/approved suppliers and sub-contractors



## OPERATION AT HIGHEST ETHICAL STANDARDS AND LOWEST RISK

- › Bertling's Group Values & Code of Conduct (VCOC) records all beliefs and values
- › It sets down our commitment to honesty, integrity and the promotion of an open and diverse corporate culture
- › VCOC also confirms Bertling's commitment to maintain the highest ethical standards wherever we conduct our business, every day and everywhere
- › Standards for international trade compliance
- › Membership of TRACE International and UN Global Compact Signatory

## ENVIRONMENTAL COMPLIANCE AND SUSTAINABILITY

- › Bertling welcomes its duty of care and is committed to the protection and welfare of the environment
- › Visible leadership demonstrates this commitment to our staff, our customers and to the general public
- › Protection & management of environmental aspects is a global policy at Bertling
- › All offices within the Bertling Group are required to subscribe to these standards from day one
- › Supporter of the UN Sustainability Goals

## COMMITMENT TO RESPONSIBLE LOGISTICS SOLUTIONS

- › We aim for CO2 neutral operations within 10 years by our 3-step approach, which is (1) measure, (2) reduce, (3) compensate
- › We work with industry leaders to support high impact, positive change projects
- › We have developed our IT system reporting to clearly inform our clients on the environmental impacts of transport operations
- › We are working towards providing options for greener transport solutions for a carbon-free future

ROAD TO ZERO



YOU HAVE THE CHOICE. WE'LL MAKE IT HAPPEN.





## 1. BLU – ONE GLOBAL SYSTEM

- Used by all Bertling offices around the globe
- Developed in-house in close collaboration with Bertling's operations experts
- Adaptable to any kind of cargo, project or supply chain
- Continuous enhancement for better process support

### KEY ADVANTAGES OF BLU

- ✓ Cost reduction and increased productivity
- ✓ Less administrative effort
- ✓ Varied capabilities for system integrations, EDI interfaces and reporting
- ✓ Budget control and easy analysis tools
- ✓ Real-time reporting and data control
- ✓ Automated compliance checks and sub-contractor evaluation

## 2. TRACKING & TRACING

- Easy to set up, easy to use and provides full control
- Real-time information on any shipment is available 24/7 at your fingertips
- Usually max. 6 weeks implementation/setup time
- Access through the internet – no software installation required
- Adaptable also during the project to match changing requirements
- Protected access through individual user names and passwords



## 3. REPORTING

- › Setup of meaningful reports, statistics and KPI measuring & analysis tools
- › Customized dashboards in modern designs and any required language
- › Provision of real-time reporting data for client's own BI tools
- › Report types include (but are not limited to):

- |                              |                                  |
|------------------------------|----------------------------------|
| ✓ Material Status Report     | ✓ Supplier Non Compliance Report |
| ✓ Receiving Report           | ✓ Supplier Promised Ready Report |
| ✓ Cost Control Report        | ✓ Actual vs. Budget Report       |
| ✓ Freight Forecasting Report | ✓ OS&D Report                    |
| ✓ Expediting Report          | ✓ On Hand Report                 |

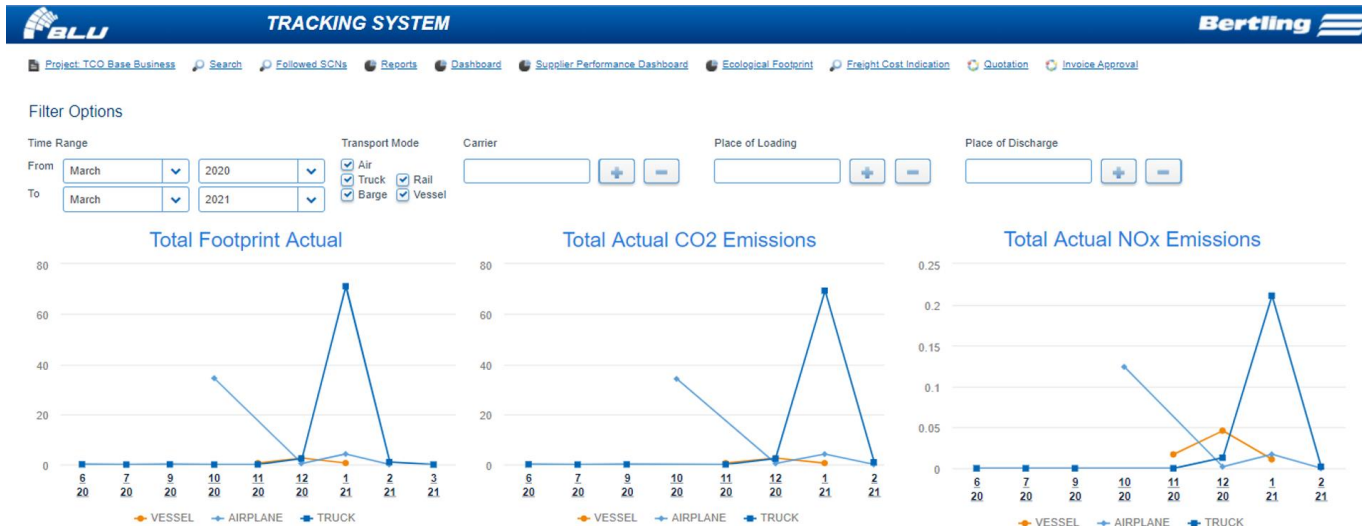
## 4. EDI & DATA SERVICES

- › Support of all common EDI formats and protocols
  - › Well thought-through mapping, testing and implementation process
  - › No direct system interface, coupling via middleware to reduce complexity
  - › Each EDI interface tailor-made to your functional and system requirements
  - › Global track record of robust, stable and globally available EDI connections
- Reduced costs and increased productivity based on high-quality real-time data



STATISTIC REPORTS FOR ECOLOGICAL FOOTPRINT CALCULATION

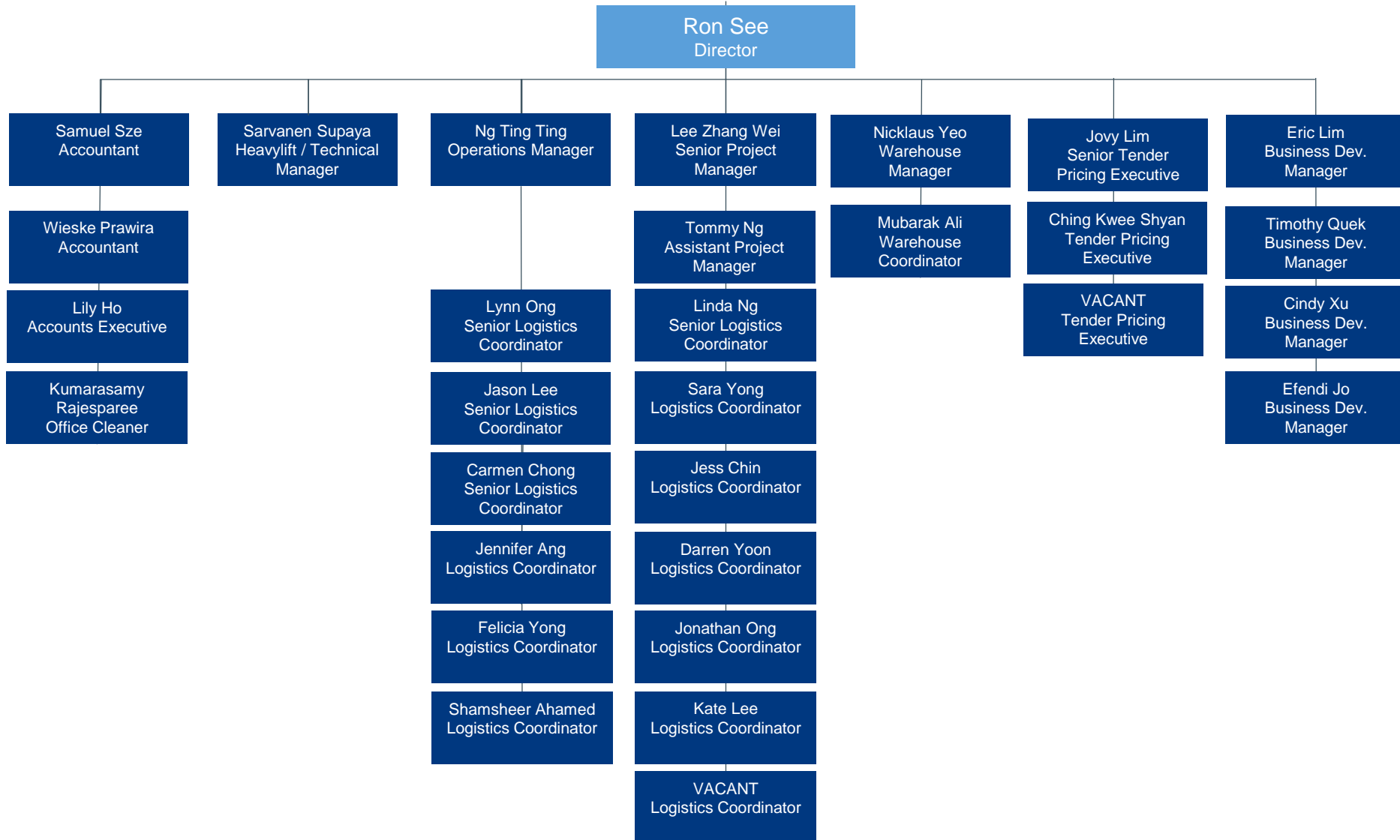
- Comprehensive information on the ecological footprint of all shipments is available in detailed statistic reports and highly visual dashboards
- This data serves as a basis for KPI measuring, which will help you to evaluate and meet your sustainability goals
- Among the shipment and cargo information, the following emission types can be tracked and evaluated (estimated and actual):
  - Greenhouse gas emissions (GHG) in t
  - Energy in MJ
  - Carbon dioxide emissions (CO2) in t
  - Nitrogen oxide emissions (NOX) in kg
  - Non-methane hydro carbons (NMHC) in kg
  - Sulphur dioxide emissions (SO2) in kg
  - Particles (PM) in kg



## BERTLING IN SINGAPORE

- Part of the Asia Pacific Region with Singapore being the Head Office in ASPAC
  - Regional Director: Neil Wooldridge
  - Country Manager: Ron See
  
  - More than 20 years in business with the first office opened in 2001
  
  - Own office in Singapore
- F.H. Bertling Pte Ltd**  
1 Harbourfront Place, #14-05/06,  
Harbourfront Tower One  
098633 Singapore/Logistics  
Singapore
- 30 local experts ready to handle your transport needs
  
  - ISO 9001: 2015, ISO 45001:2018, ISO 14001:2015, ISO 37001: 2016 and bizSAFE certified, FIATA Member





## OUR EXPERT TEAM IN SINGAPORE

### KEY PERSONNEL

Ron See, Director

- More than 20 years of experience in logistics

Tingting Ng, Operations Manager

- More than 20 years of experience in logistics

Sarvanen Supaya, Heavylift Manager

- More than 20 years of experience in logistics

Zhangwei, Project Manager

- More than 12 years of experience in logistics



## BERTLING IN SINGAPORE

- Strong focus on all modes of transportation (air/sea/road/rail) and all sizes of cargo
- Special expertise in the management of upstream oil & gas, downstream and refinery construction logistics, renewables, civil engineering projects, large and complex turnkey freight management contracts.

### Project Examples

- FPSO Almirante Barroso MV32
  - FPSO Cidade de Campos dos Goytacazes MV29
  - FPSO Carioca MV30
  - FPSO MV34 ENI Area 1 Mexico Development
  - Upgrade Project of Changi Airport Terminal 2
  - Shell ECC Debottlenecking and Flare Revamp Project
  - Shell ECC Cogen Project
  - Siemens Tuaspring CCPP Project
  - Siemens San Gabriel CCPP Project
  - Jurong Aromatics Complex Project
- 
- Warehousing facilities in strategic location with close proximity to all Ports and Oil & Gas facilities/companies → all less than 10km away



## CORE COMPETENCIES IN SINGAPORE

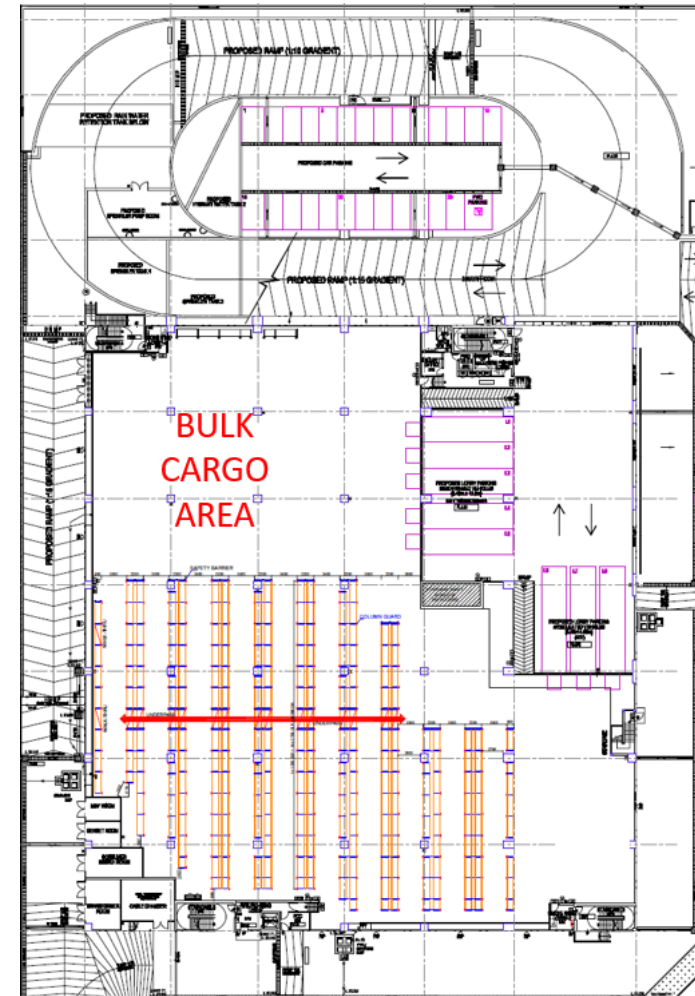
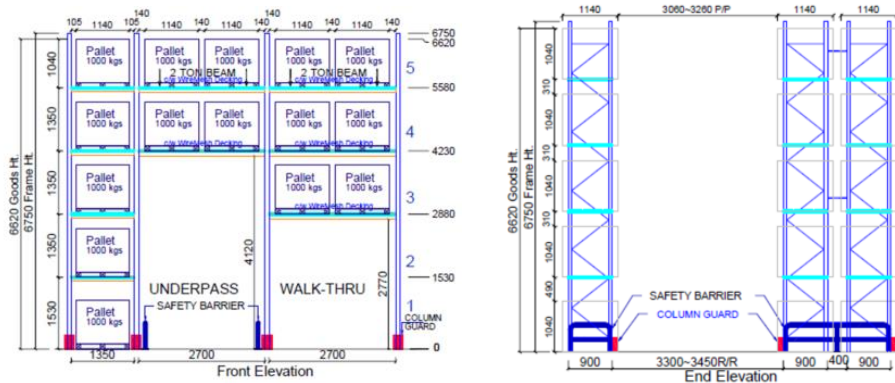
- Freight forwarding services for all modes of transportation (air/sea/road/rail) and all sizes of cargo
- Project logistics services including risk & compliance management
- Transportation of extra-large/over dimensional/heavy-lift cargoes
- Heavy-lift engineering, including technical & commercial consulting
- Health, safety, quality and environmental planning
- Feasibility studies, route & port surveys
- Door-to-door service and customs clearance
- Sea freight including breakbulk, RoRo, charters, FCL and LCL traffic
- Warehouse services - packing/unpacking/material control, consolidation & deconsolidation





## WAREHOUSING AND MATERIAL MANAGEMENT SOLUTIONS BY BERTLING

- Major exporter scheme status for the clients
- Personalized inventory management and dedicated warehouse coordinators
- Designated shipping coordinators
- Strategic locations with close proximity to all Ports and Oil & Gas facilities/companies → all less than 10km away
- Indoor and outdoor, shelter or temperature controlled

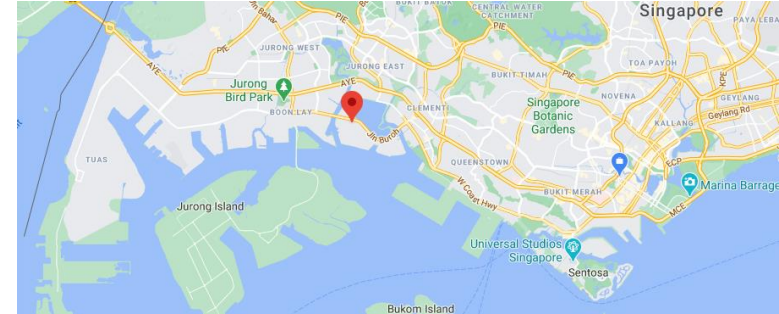


# ➤ BERTLING'S UNIQUE SETUP IN SINGAPORE



## WAREHOUSE FACILITIES IN SINGAPORE

- Dedicated loading and unloading bays
- Reach Stacker, forklift etc up to 16tons are available
- Combined open storage area of 150,000sqft
- Combine indoor storage area of 150,000sqft
- Combined pallet storage area of 10,000 slots
- Picking and Packing services
- 24 hours CCTV security control, gated and guarded.



Location: Penjurong Lane

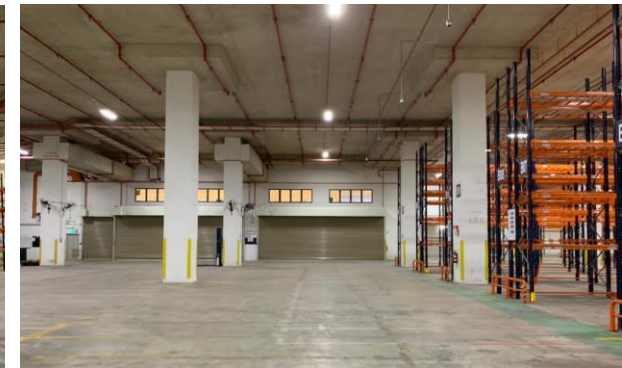
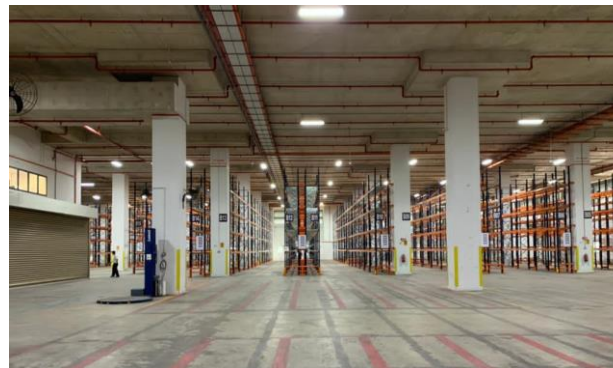
Distance to:

Keppel Shipyard = 9.9km (20 mins)

Jurong Port = 2.6km (8mins)

PSA Port = 7.9km (20 mins)

Air Cargo complex = 44.3km (50 mins)





## LOADOUT & BARGE SHIPMENT OF COLUMNS, VESSELS & REACTORS

Industry:	Oil & Gas
POL:	Malacca, Malaysia
POD:	Jurong Island, Singapore
Cargo:	Columns, vessels & reactors/maximum cargo size: 62.0m x 9.6m at 471tons
Bertling's SOW:	Load-out operation from Malacca in Malaysia and barge transportation for columns, vessels and reactors to Jurong island in Singapore.



## LOADOUT & BARGE SHIPMENT OF DIVIDED WALL TOWER

Industry:	Oil & Gas
POL:	Shanghai, China
POD:	Kuantan, Malaysia
Cargo:	Divided Wall Tower/Maximum cargo size: 67.9m x 6.0m x 6.5m at 312tons
Bertling's SOW:	Load-out operation from Shanghai in China and barge transportation for Divided Wall Tower to Kuantan, Malaysia including on-carriage into erection site.



## HEAT EXCHANGER TRANSPORT TO INDONESIA

Industry:	Oil & Gas
POL:	Singapore
POD:	Ciwandan, Indonesia
Cargo:	Heat Exchanger and accessories (Total: 4 Packages / 175,700MT / 389.06cbm) Heaviest unit at 87.5MT at 18 x 4.5 x 3.3 meters
Bertling's SOW:	Lift-on/off operations from Singapore onto LCT Barge and transport to Ciwandan, Indonesia



## ROTATING DECK MODULE & 900TON GANTRY CRANE SHIPMENT FROM CHINA TO SINGAPORE

Industry:	Oil & Gas
POL:	Qidong, Nantong, China
POD:	Singapore
Cargo:	Rotating Deck Module 25.8m x 26m x 18.6m at 908tons Crane Boom 92.4m x 12m x 8.8m at 300tons A-Frame 32m x 10.6m x 7.2m at 150tons
Bertling's SOW:	Module transportation by chartering of deck vessel for lift-on operations at private yard, including technical feasibility studies and fabrication & installation of seafastening for voyage from China to Singapore.



## CAPCO WATER BATH HEATER PROJECT

Industry:	Oil & Gas
POL:	Zhuhai, China
POD:	Singapore
Cargo:	3 main packages of water bath heaters each measuring 13.46m x 6.12m x 6.6m and weighing 205tons, plus 96 ship loose items/general cargo
Bertling's SOW:	Load-out operation from Jutal Private Jetty, ZhuHai in China, sub-contractor selection, handling of ocean charter, customs clearance, materials tracking & tracing



## LOAD-OUT OF GAS DEHYDRATION UNIT FROM INDONESIA TO KOREA

Industry:	Oil & Gas (FPSO)
POL:	Batam, Indonesia
POD:	Ulsan, Korea
Cargo:	1 x Gas Dehydration Unit each 15.48m x 8.64m x 12.27m at 171.6te
Bertling's SOW:	OOG transportation by barge for transshipment onto MV for on-carriage to Korea





## LOADOUT OF MULTIMEDIA VESSELS AND ACCESSORIES

Industry:	Oil & Gas (FPSO)
POL:	Santos, Brazil
POD:	Tianjin Bomesc, China
Cargo:	Multimedia Vessels and accessories. (Total: 19 Packages/188.405MT/ 446.978cbm) Heaviest unit at 30.5MT at 4.3m x 4.0m x 4.2m
Bertling's SOW:	Load-out operation from Santos, Brazil for all cargo onto MV Da Tai bound for Tianjin Bomesc, China.



## LOADOUT OF GTG AND ACCESSORIES

Industry:	Oil & Gas (FPSO)
POL:	Drammen, Norway
POD:	Dalian, China
Cargo:	Gas Turbine Generator Package (GTG) and accessories. (Total: 3 main skids + 12 Boxes + 12 x 40'HC/584.604MT/2326.936cbm) Heaviest unit at 150MT at 20.0m x 4.6m x 7.75m
Bertling's SOW:	Load-out operation from Drammen, Norway via hydraulic trailers and loading of all cargo onto MV Lisanna bound for COSCO Dalian shipyard, China.



## LOADOUT NITROGEN RECEIVER AND ACCESSORIES

Industry:	Oil & Gas (FPSO)
POL:	Pyeongtaek, South Korea
POD:	COSCO Dalian, China
Cargo:	Nitrogen Receiver and accessories. (Total: 3 packages/137.8MT/926.614cbm) Heaviest unit at 48.5MT at 13.25m x 4.8m x 5.07m
Bertling's SOW:	Load-out operation from Pyeongtaek Port, South Korea of all cargo onto MV TIP Copenhagen bound for COSCO Dalian shipyard, China.



## LOADOUT REVERSE OSMOSIS & WATER TREATMENT PACKAGE

Industry:	Oil & Gas (FPSO)
POL:	Qingdao port, China
POD:	COSCO Dalian, China
Cargo:	Reverse Osmosis & Water Treatment Package. (Total: 8 packages/35.572MT/344.31cbm) Heaviest unit at 22.91MT at 8.5m x 5.1m x 4.4m
Bertling's SOW:	China domestic barging. Load-out operation from Qingdao port, China of all cargo onto MV Jin Fu Hao 217 bound for COSCO Dalian shipyard, China.



## LOADOUT E-HOUSE MODULE PACKAGE

Industry:	Oil & Gas (FPSO)
POL:	Tianjin Bomesc, China
POD:	COSCO Qidong, China
Cargo:	E-House Module. (Total: 1 skid / 1400.20MT / 10,466cbm)

**Bertling's SOW:** China domestic module transportation via self-propelled deck vessel, including coordination for PT Handbook registration / customs clearance with both shipyards, technical documents review, attendance and coordination at both loading and discharging operations.



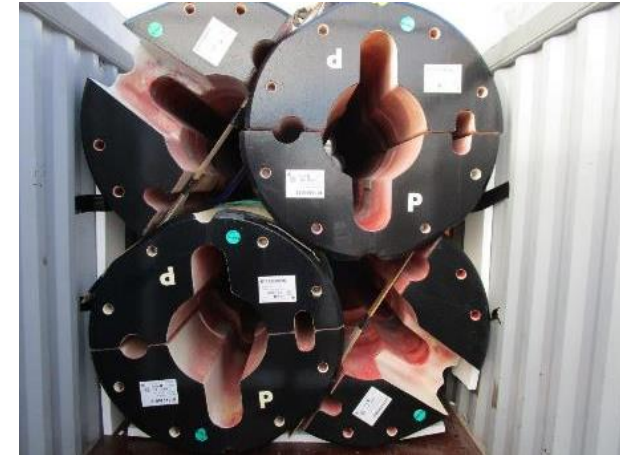
## TRANSPORT FROM BRAZIL TO SINGAPORE

Industry:	Oil & Gas
POL:	Rio De Janeiro, Brazil
POD:	Singapore
Cargo:	Risers (Total: 29 Packages/412MT/1101cbm) Heaviest unit at 17MT at 23 x 1.4 x 1.4 meters
Bertling's SOW:	Freight from POL to POD including barging for overside receiving and deliver to Keppel yard



## RISER JOINTS & TELESCOPIC JOINTS

Industry:	Oil & Gas
POL:	Port Klang, Malaysia
POD:	Kristiansand, Norway
Cargo:	102 nos. of Riser Joints & Telescopic Joints (total 4460RT)
Bertling's SOW:	Loadout operations onto vessel, cargo operations supervision, liaison with MWS, and ocean voyage.



## RISER BUOYANCY MODULES

Industry:	Oil & Gas
POL:	Fremantly, Australia
POD:	Busan, Korea
Cargo:	1006 nos. of Riser Buoyancy Elements (total 4200RT)
Bertling's SOW:	Coordination with cargo supplier for loading elements into 84 * 40'OT over 9 batches, including L/S/D as per client's handling manual requirement, ocean voyage, unloading at destination.





## SIEMENS TUASPRING CCP

Industry: Power Plant

POL: Worldwide

POD: Singapore

Cargo: Power plant equipment and spares total approximately 27,000 freight tons/  
6,500 metric tons.

Bertling's SOW: Airfreight and Seafreight transportation including door-to-door deliveries, coordination with relevant agencies on permits and licences approval, technical assistance and supervision of the loading progress, safe transportation from point-to-point, vessel charter, cargo tracking & tracing.



## SALALAH INDEPENDENT WATER & POWER PLANT SHIPMENT

Industry:	Power Plant
POL:	Singapore
POD:	Salalah, Oman
Cargo:	2 unpacked tanks measuring 16.5m x 3m x 3.05m and weighing 40tons each
Bertling's SOW:	Sub-contractor selection & management, heavy-lift ocean charter, materials tracking & tracing



## MASSIVE MODULE MOVEMENT VIA THE YANGZE TO NEW CALEDONIA

Industry: Mining

POL: China

POD: New Caledonia

Cargo: 2 baghouse modules, each 33,0m x 26,5m x 37.5m at 1,162tons and 1 secondary module measuring 18.0m x 20.8m x 29.7m at 489tons

Bertling's SOW: OOG and heavy-lift transport by using tailor-made sea fastening grillage, upstream the Yangtze River in a sea voyage of 29 days via the Philippines



## FRONT SHIELD AND THRUST PIPE DELIVERY TO THAILAND

Industry:	Infrastructure
POL:	Singapore
POD:	Laem Chabang, Thailand
Cargo:	Front Shield, Thrust Pipe and accessories (Total: 5 Packages / 214MT / 497cbm) Heaviest unit at 95MT at 8.872 x 4.575 x 4.575 meters
Bertling's SOW:	Freight from Singapore to Laem Chabang, Thailand



## CONSTRUCTION LOGISTICS ( TUNNEL BORING MACHINES)

Industry: Construction/Infrastructure

POL: Nansha, China

POD: Incheon, Korea

Cargo: New Tunnel Boring Machines, weight up to 70 tons per piece, 3400 CBM

Bertling's SOW: Pre-Load Survey of cargo, Storage at port, Loading on heavy lift vessel



## SUBMARINE RESCUE EXERCISE CHILE

Industry:	Defence
POL:	San Deigo, United States of America
POD:	Santiago, Chile
Cargo:	Marine Anchors, Baster Bolt Sea Stands, Lightweight Mooring Systems, ROVs, etc weighing 158,325tons/1,243.0cbm
Bertling's SOW:	Port-to-door deliveries, coordination with relevant agencies on permits and licences approval, technical assistance and supervision of the unloading progress, safe transportation from point-to-point, ground coordination, ferrying services for navy personnel at camp sites.



## SUBMARINE RESCUE OPERATIONS ARGENTINA

Industry:	Defence
POL:	Comodoro Rivadavia, Argentina
POD:	Comodoro Rivadavia, Argentina
Cargo:	Submarine rescue equipment and supplies
Bertling's SOW:	Port agency, vessel clearance, Husbandry, inland domestic deliveries, coordination with relevant agencies on permits and licences approval, provision of mobile crane and forklift equipment, welding works, vessel modification, technical assistance and supervision of the unloading progress, safe transportation from point-to-point, ground coordination, ferrying services for navy personnel at camp sites.

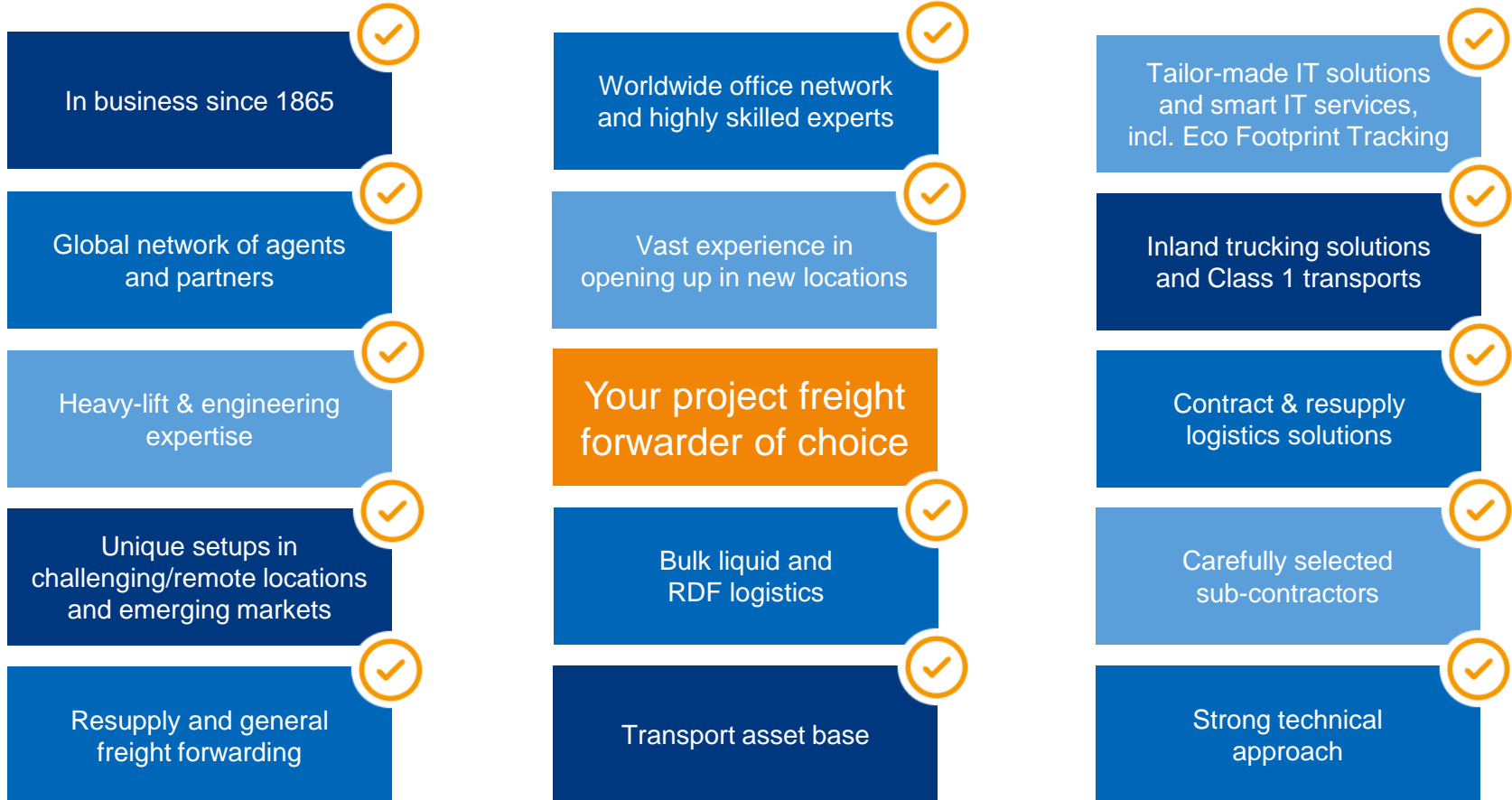



## AN124 CHARTER FOR POD UNITS

Industry:	Oil & Gas
POL:	Singapore
POD:	Norway
Cargo:	Conductor pipes weighing over 38tons
Bertling's SOW:	Sub-contractor selection and management, packing, technical assistance and supervision of the heavy-lift aircraft charter, materials tracking & tracing



# FOR YOU TO TAKE AWAY ABOUT THE BERTLING GROUP



 An excellent operational performance does not need many words of explanation, but one simple answer: Bertling.

➤ THANK YOU FOR YOUR INTEREST!



ANY QUESTIONS? PLEASE CONTACT...

Efendi Jo  
Business Development Manager

📞 Phone: +65 64224386 / +65 94515684

✉ Email: [efendi.jo@bertling.com](mailto:efendi.jo@bertling.com);

F. H. Bertling Pte Ltd  
1 Harbourfront Place  
#14-05/06, Harbourfront Tower One  
098633 Singapore

LET'S CONNECT!

 [Bertling Logistics on LinkedIn](#)

WE LOOK FORWARD TO HEARING FROM YOU.

